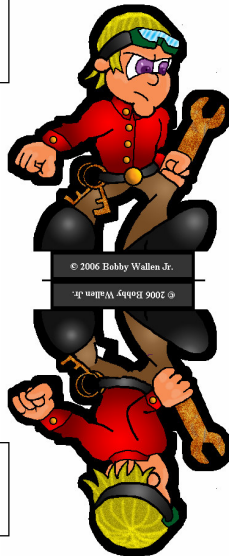
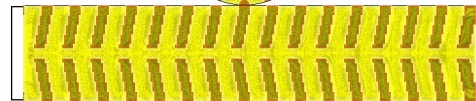
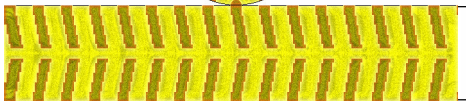
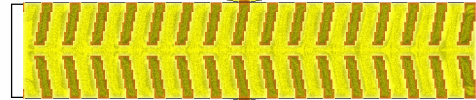
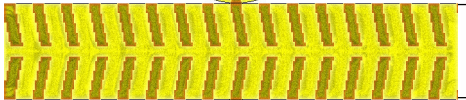
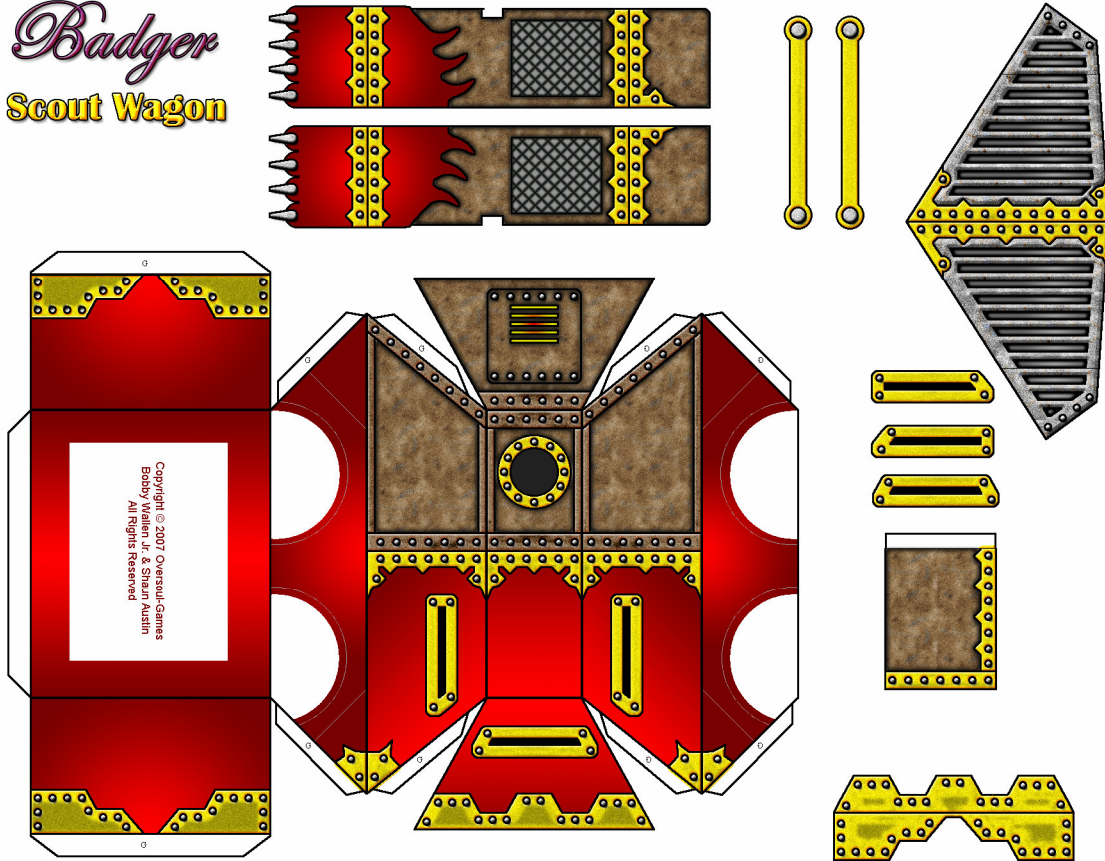


Badger Scout Wagon



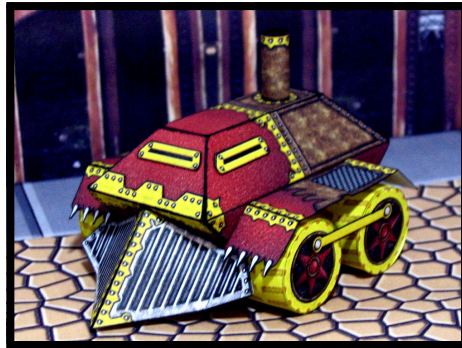
Copyright © 2007 Oversoul-Games
Bobby Wallen Jr. & Shaun Austin
All Rights Reserved

The Badger Scout wagon uses the latest technological advances within its design. Featuring a fully self contained Burner/boiler system with dual chamber pistons, the Badger has a reliable and strong power source for infiltrating close to enemy lines.

The wheel treads are made from a strong tungsten/copper alloy that enables the badger to grip in most situations. The same alloy is used throughout the vehicle where weaknesses have appeared in previous designs. This includes weld seams around the cabin and the spine of the demolition blade.

Turning is achieved by adjusting the speeds of the wheels on each side of the vehicle, Allowing it to turn on the spot if necessary. Each rear wheel is connected to the drive shaft through a planetary gear system using a hard clutch. The front wheels are on stub axles to allow interior room for the Driver. However, coupling rods give the vehicle constant four wheel drive.

An extra fuel hopper can be attached to increase the vehicles range. And an internal access chamber to the burner means the vehicle can be refuelled without leaving the cabin. All instrumentation is piped to the cabin, so the Driver is aware of steam pressures and functionality of the vehicle at all times. The vision slits are backed by 4 inch hardened glass and the front vision slit incorporates a magnifying mechanism for observation.



The Badger is the ultimate pathfinder and the perfect addition to any Force.

Instructions

1. Remove the Chassis, score, fold and glue into shape.
2. Remove the Vision slits and glue into position on the Chassis.
3. Remove the Wheels and roll the long section into a cylinder, securing with glue.
4. Fold the circles over to cap the sides of the cylinders and secure with glue.
5. Glue the Wheels into position on the Chassis making sure the rod pivots are in the same position. To keep the cylinder joints at the bottom, put the pivots at the top.
6. Remove the burner stack. Color the reverse side black with a marker.
7. Roll into a cylinder and secure with glue before mounting it on the top of the chassis.
8. Remove the fenders and score and fold.
9. Glue to the sides of the chassis above the wheels.
10. Remove the Coupling rods and glue onto the wheels.
11. Remove the front Brace, score, fold and glue onto the front of the Chassis.
12. Remove the Demolition Blade, score and fold into shape. Glue onto the front of the Chassis below the Brace.

